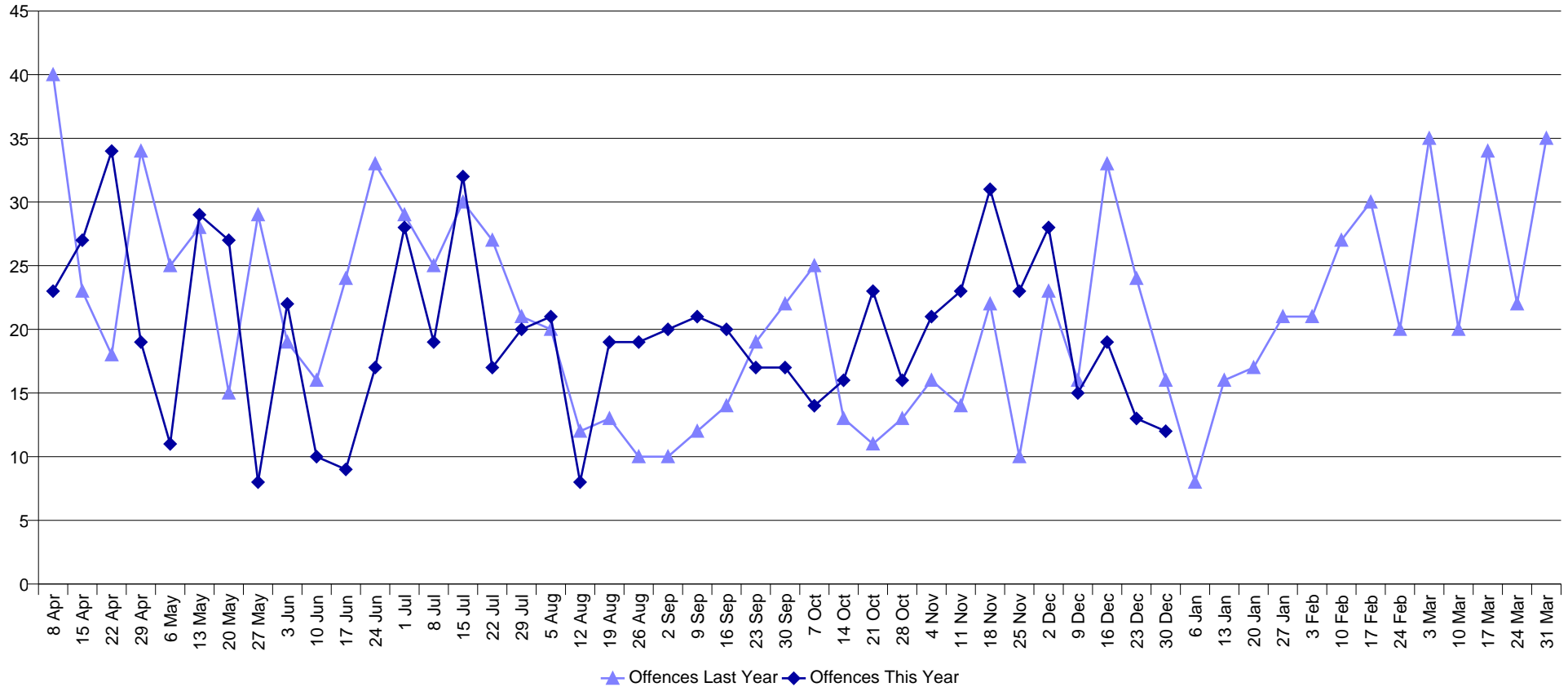


Weekly Personal Robbery Performance - Barnet



FYTD Totals are calculated from 1 April

Offences	21 Oct	28 Oct	4 Nov	11 Nov	18 Nov	25 Nov	2 Dec	9 Dec	16 Dec	23 Dec	30 Dec	FYTD Total
Last Year	11	13	16	14	22	10	23	16	33	24	16	807
This Year	23	16	21	23	31	23	28	15	19	13	12	771
% Change	109.1%	23.1%	31.3%	64.3%	40.9%	130.0%	21.7%	-6.3%	-42.4%	-45.8%	-25.0%	-4.5%

Sanction Detections	21 Oct	28 Oct	4 Nov	11 Nov	18 Nov	25 Nov	2 Dec	9 Dec	16 Dec	23 Dec	30 Dec	FYTD Total	SD Rate
Last Year	5	2	0	3	2	5	3	0	3	1	0	133	16.5%
This Year	3	0	3	2	4	1	0	1	3	4	1	146	18.9%

For Offences - Plum indicates a percentage increase on last year, and Sky Blue indicates a percentage decrease on last year. For Sanction Detections - Plum indicates a SD Rate decrease on last year, and Sky Blue indicates a SD Rate increase on last year.

Data is subject to daily change

Last Refresh Date: 02/01/2013

Performance Helpdesk - 783131

If there are any queries with this report, please call the Helpdesk

PD005/1213/39/v1

02/01/2013 © MOPAC (2013)